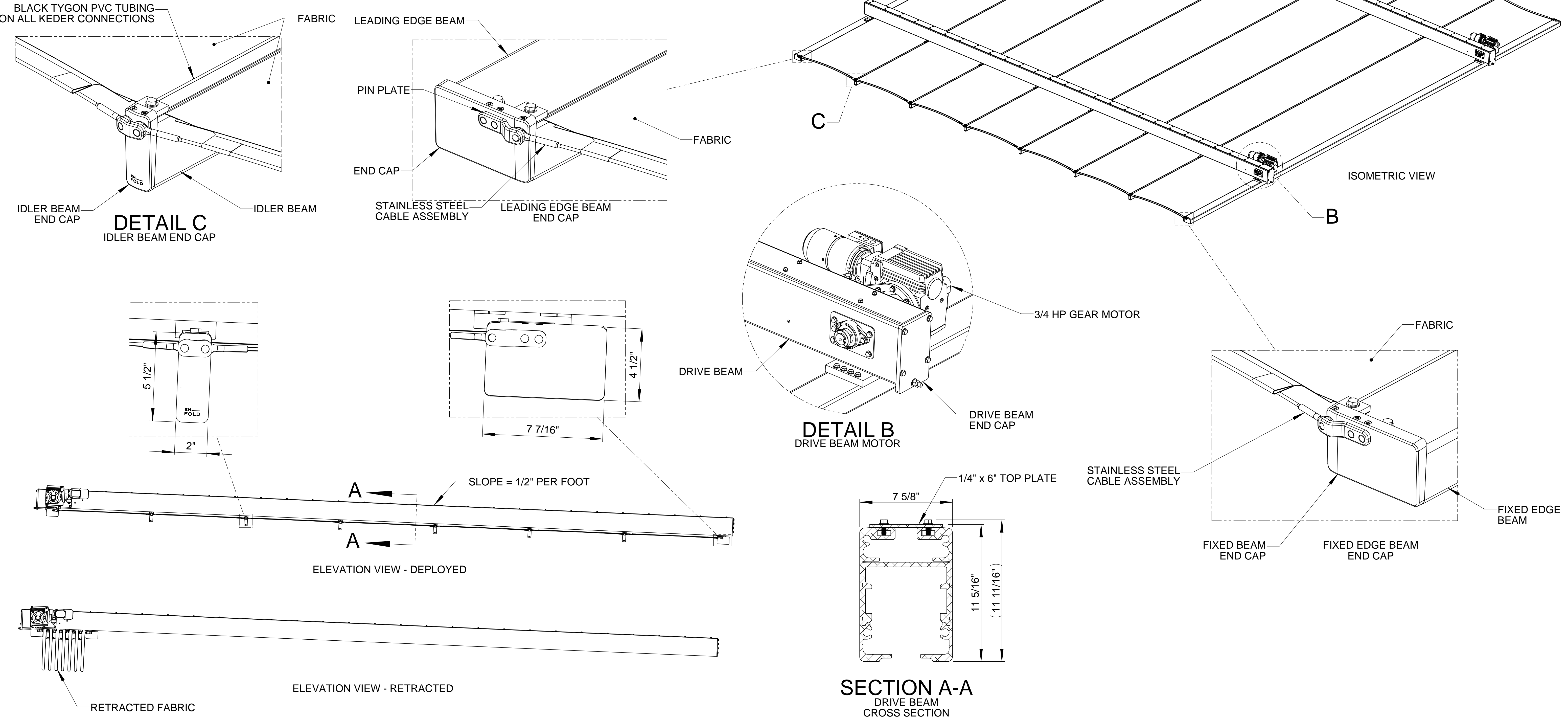
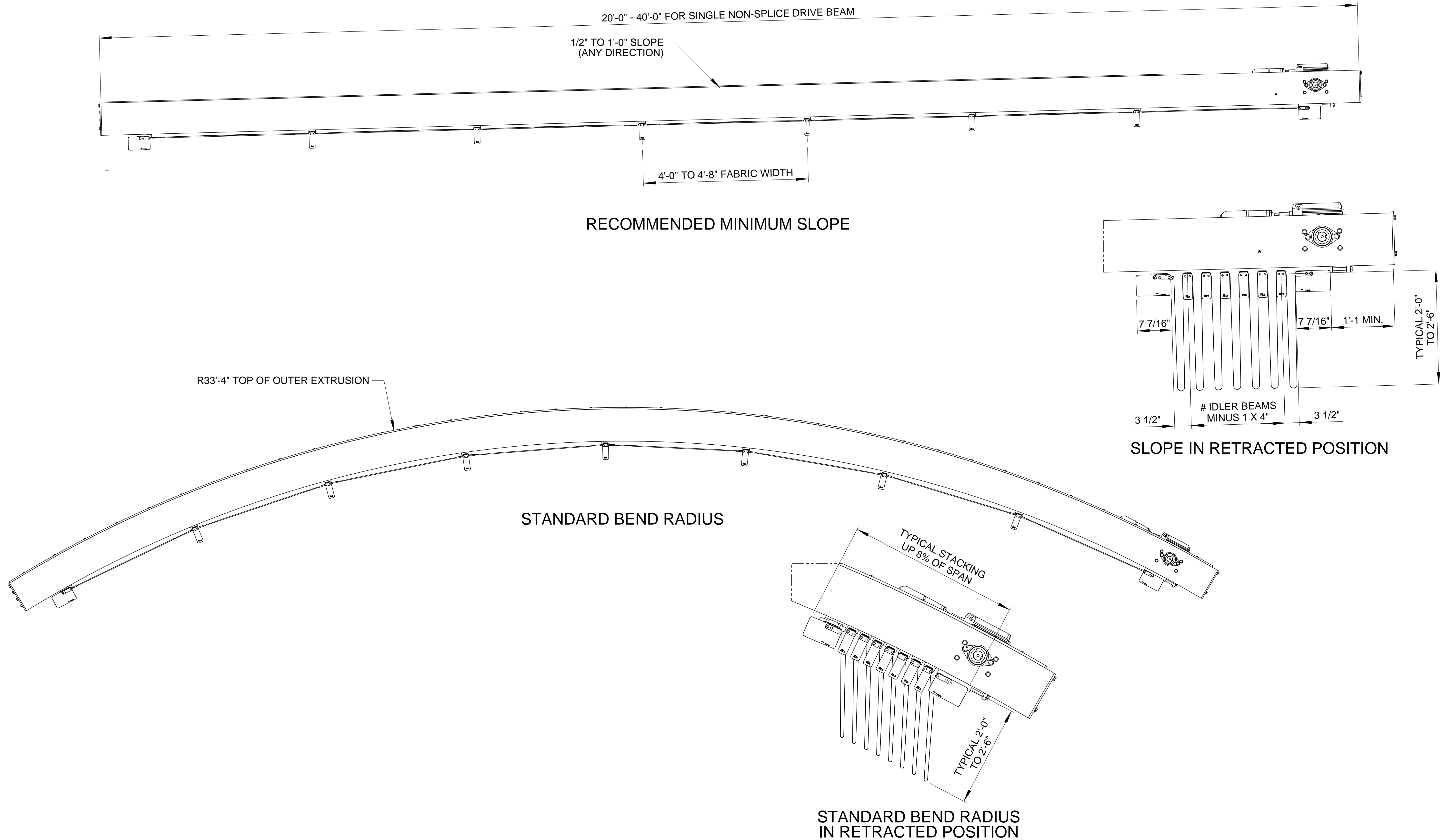
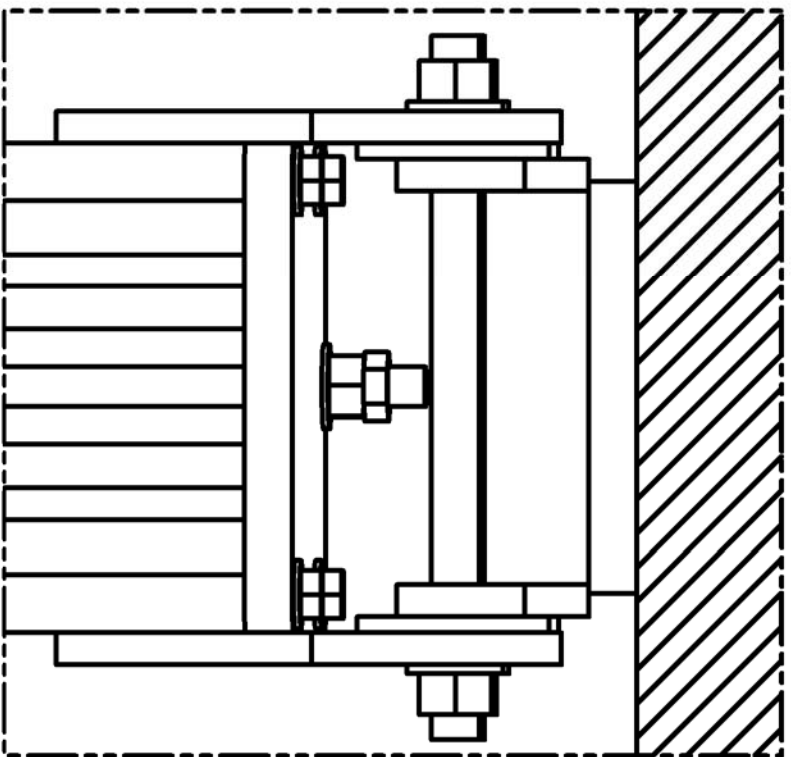
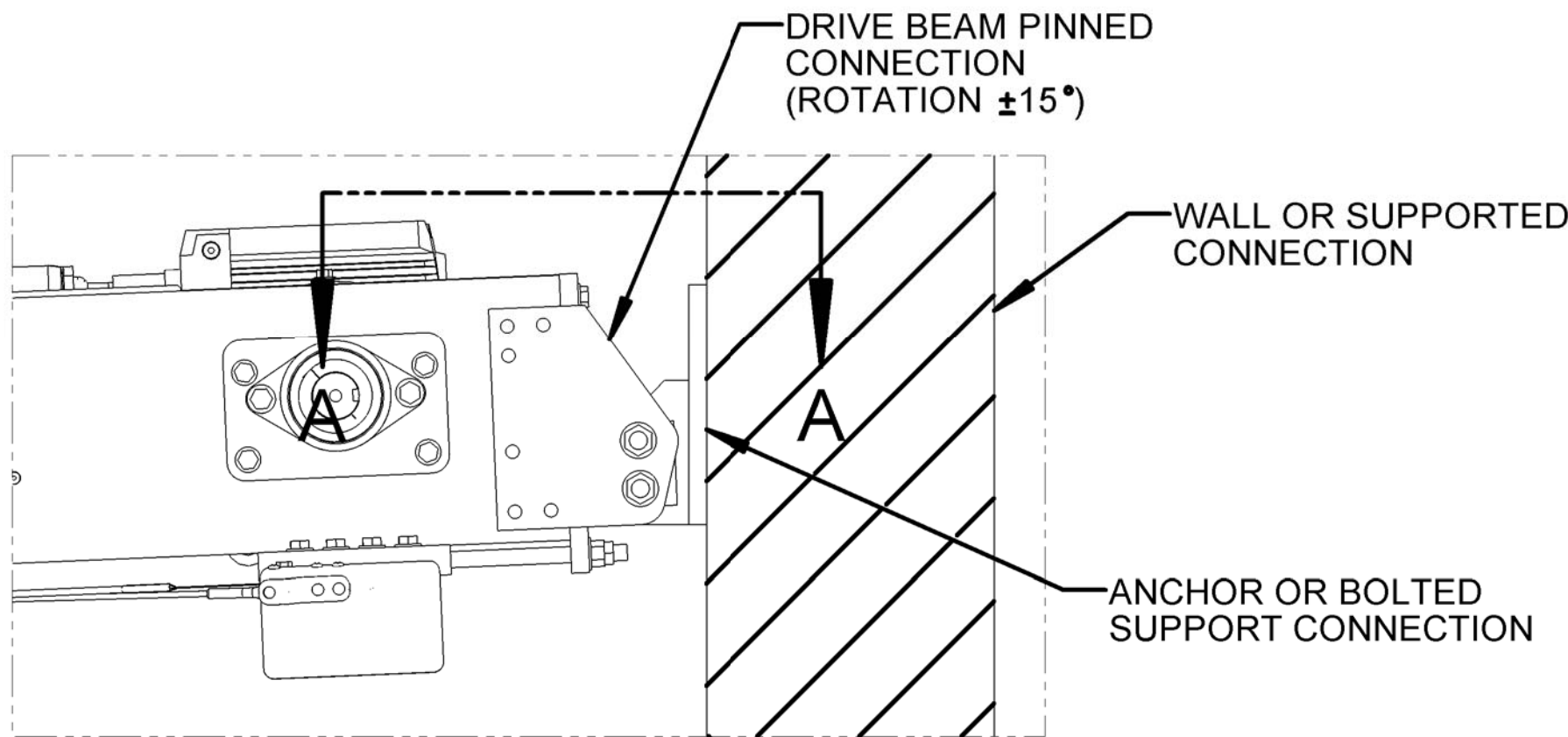
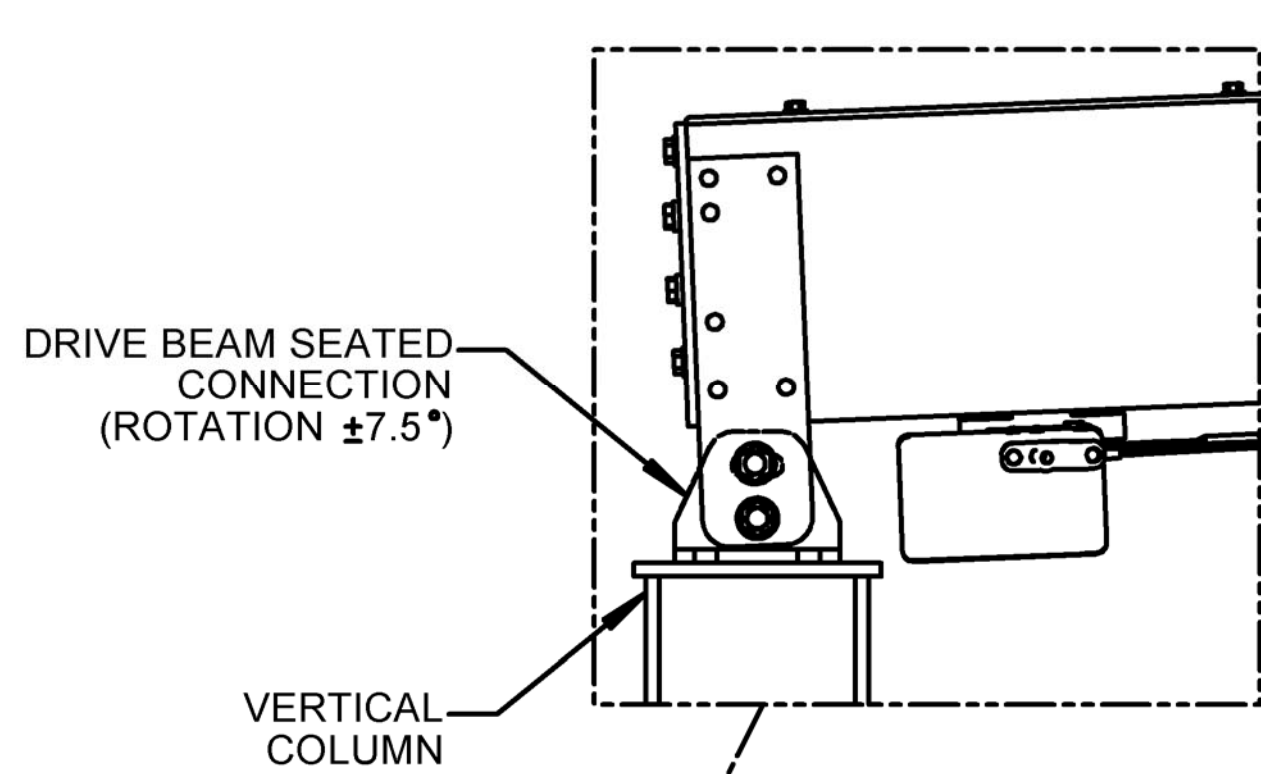


- NOTES:
- 1. STANDARD FABRIC SLOPE = 1/2" PER 1'-0" (ANY DIRECTION)
 - 2. TYPICAL DRIVE BEAM SPACING = 20'-0" TO 25'-0"
 - 3. TYPICAL FABRIC PANEL WIDTH = 4'-6"

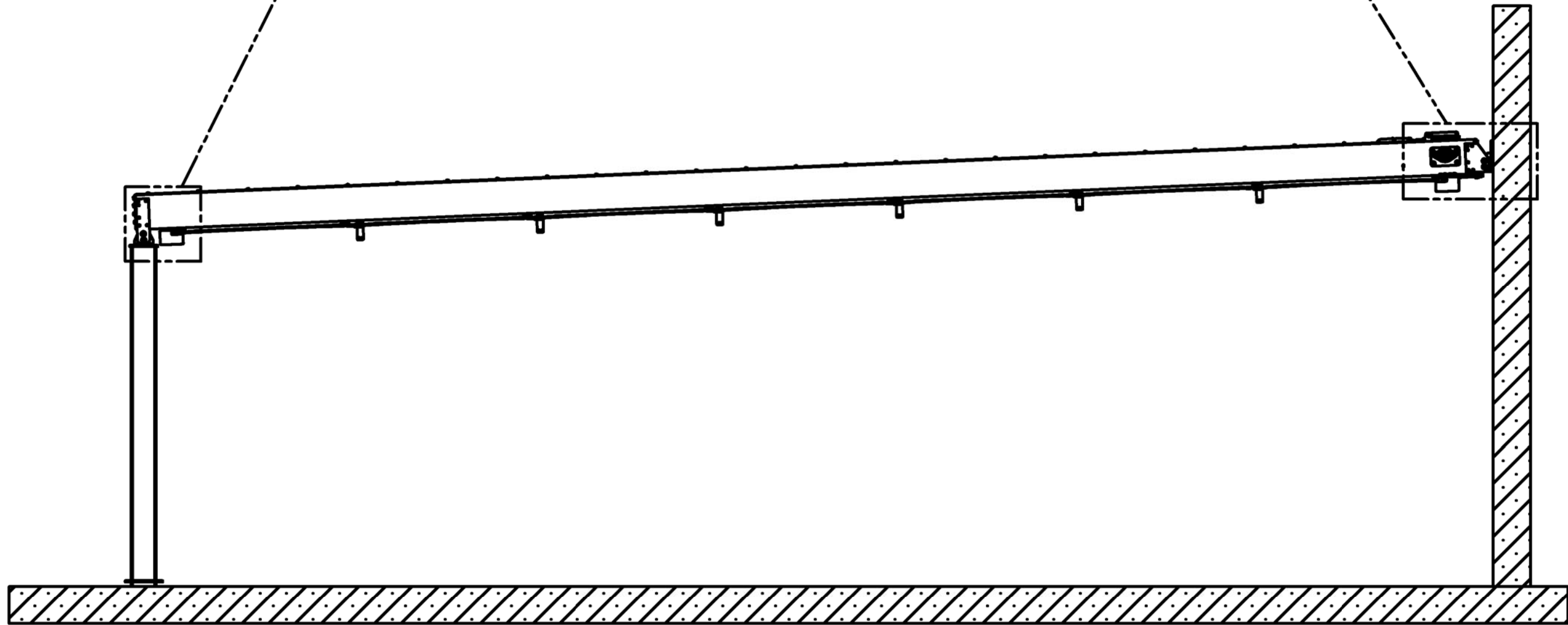
STANDARD EN-FOLD DETAILS



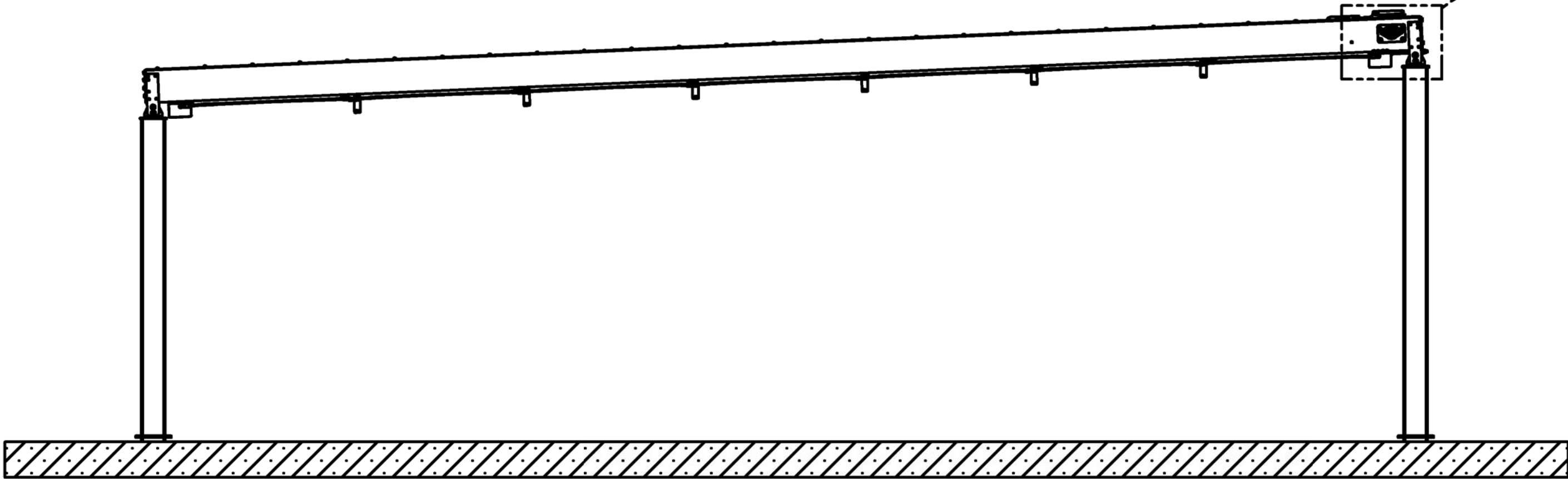
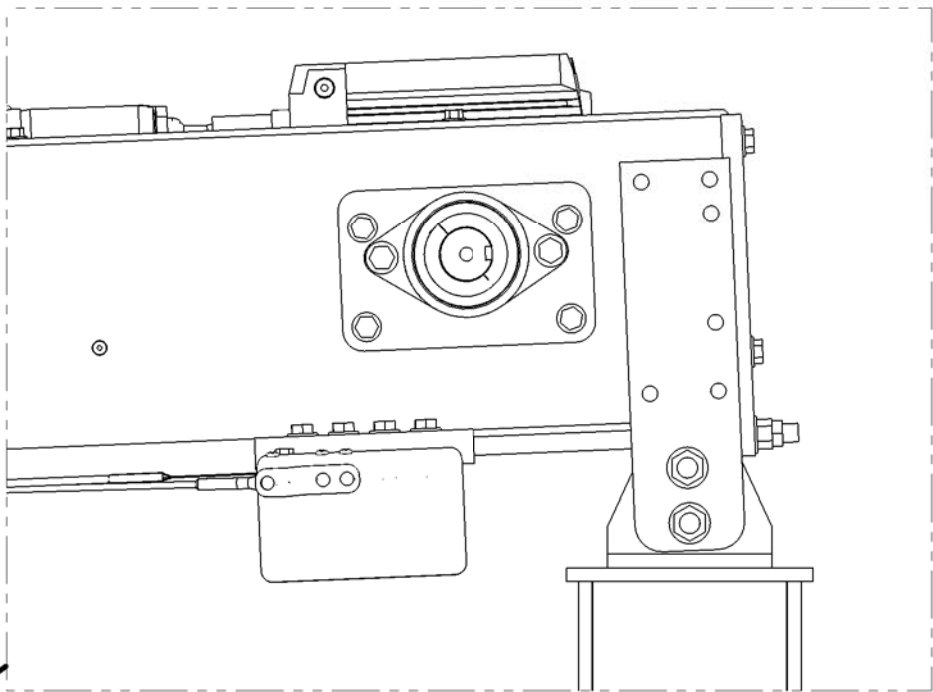




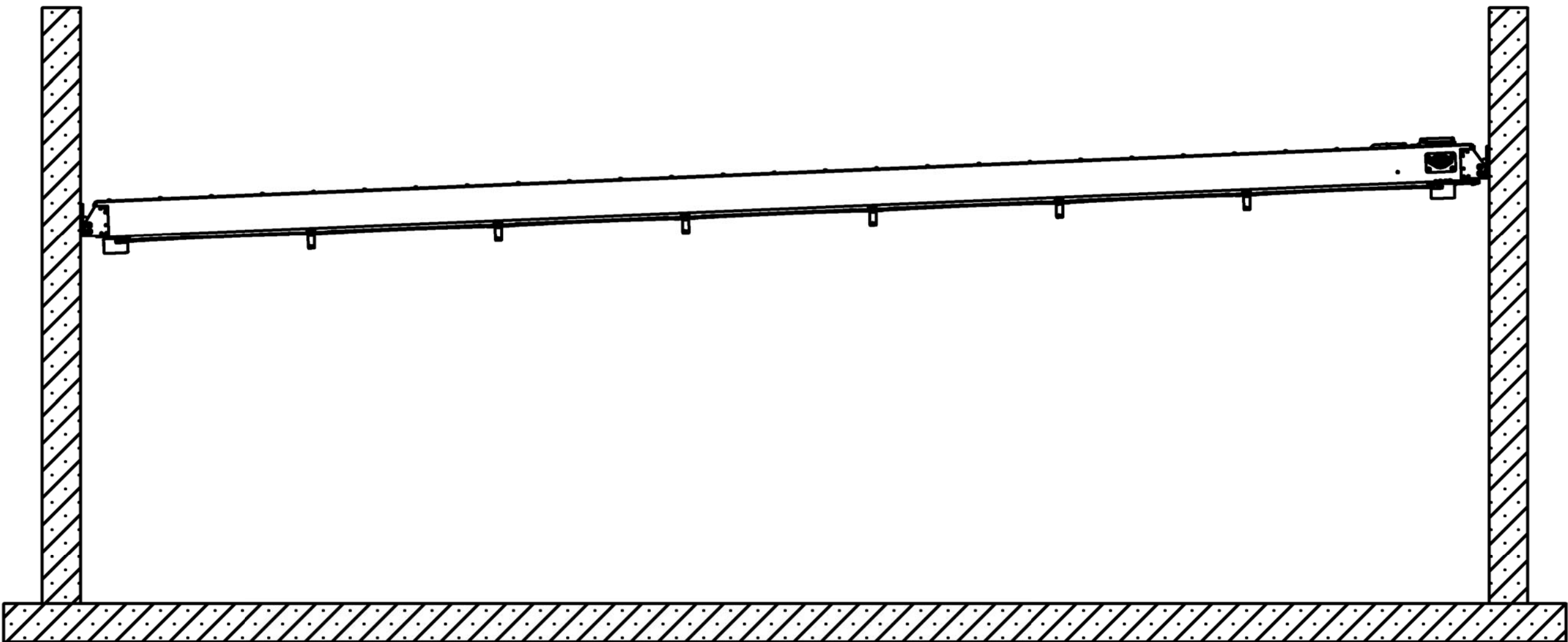
SECTION A-A



SPANNING BETWEEN WALL AND COLUMNS

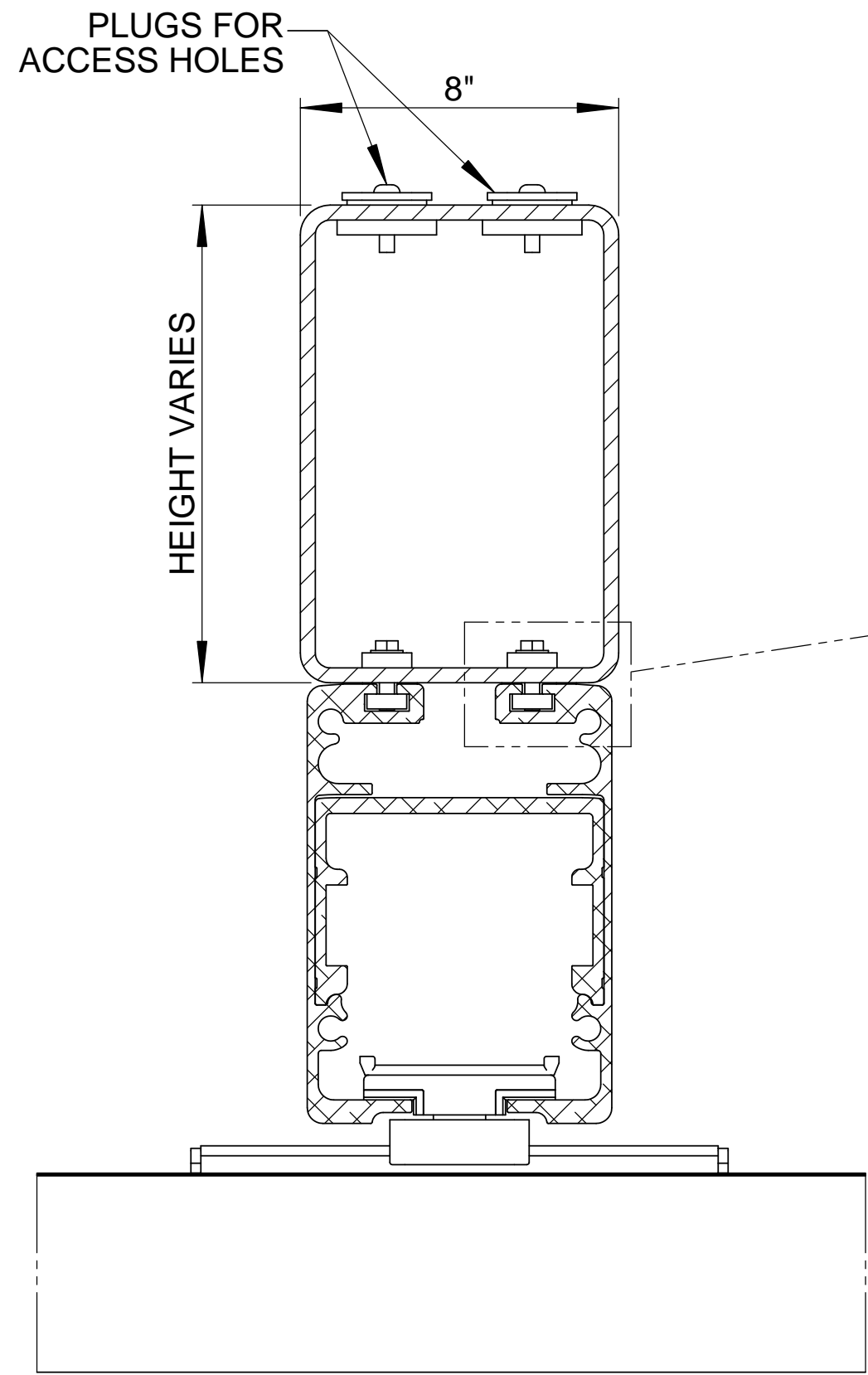


SPANNING BETWEEN COLUMNS

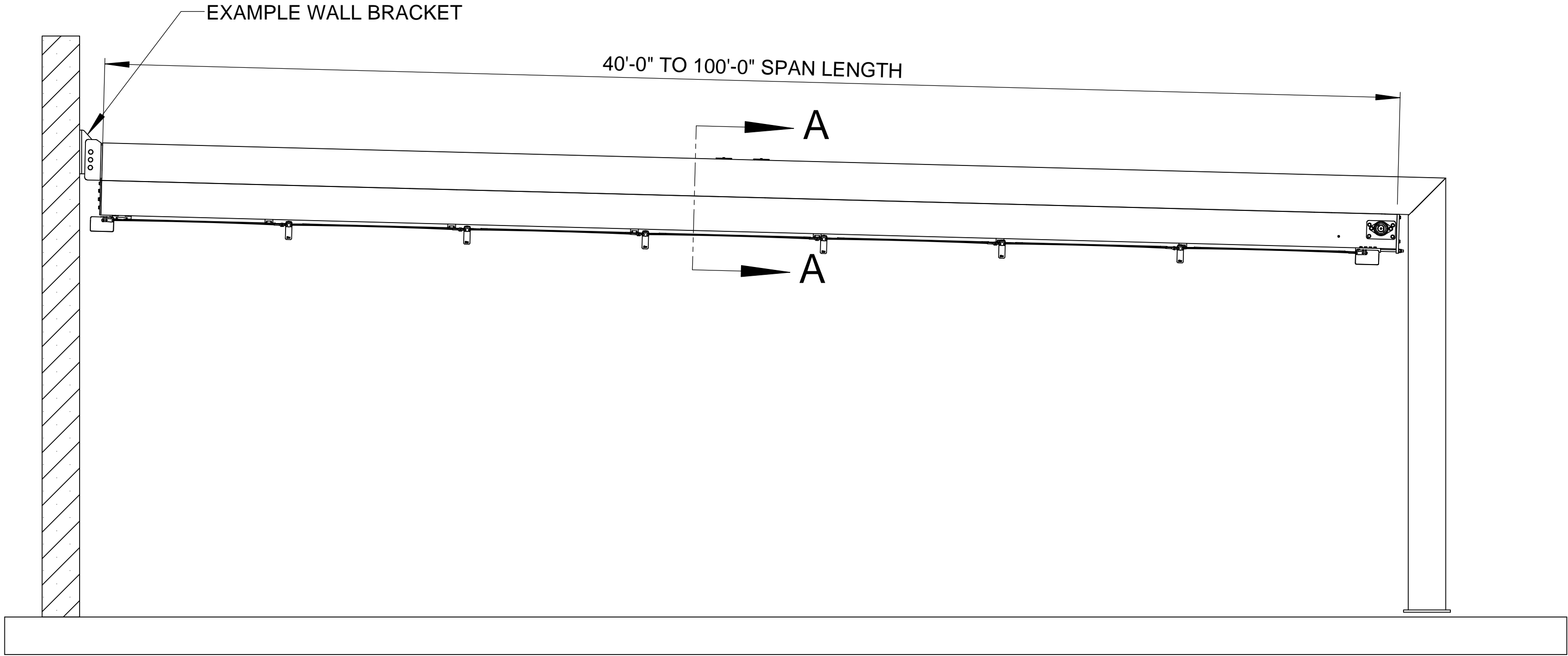
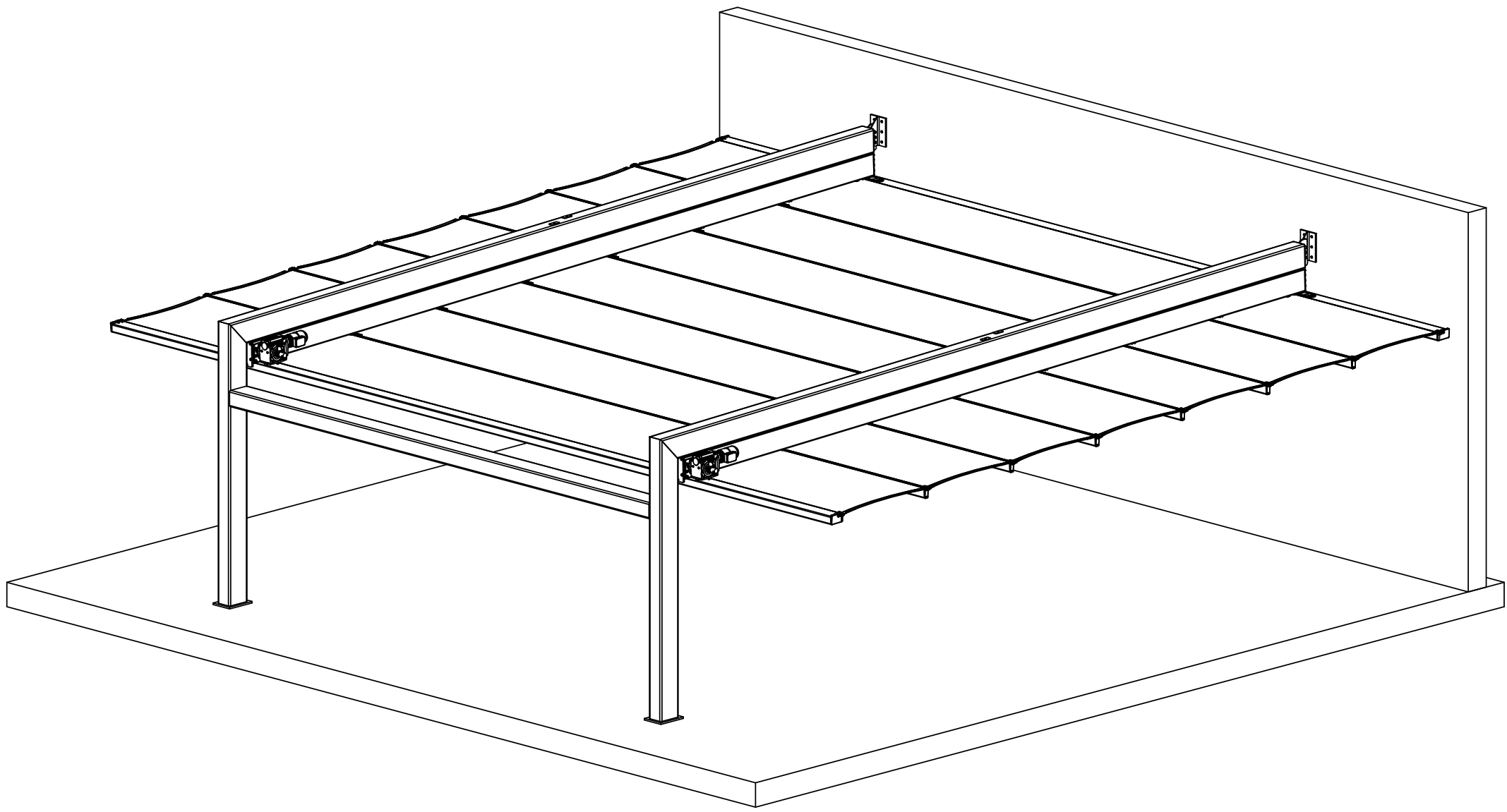
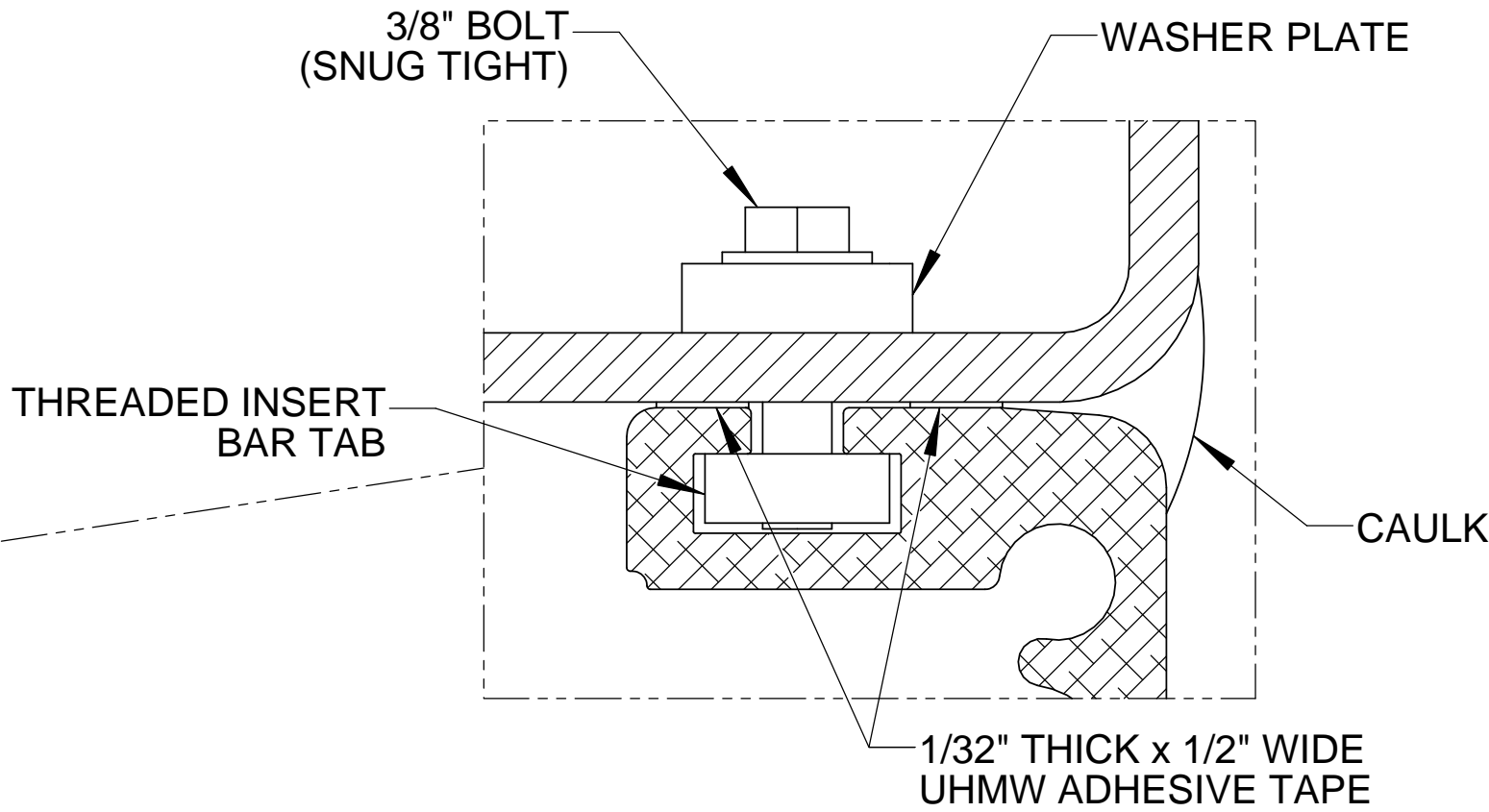


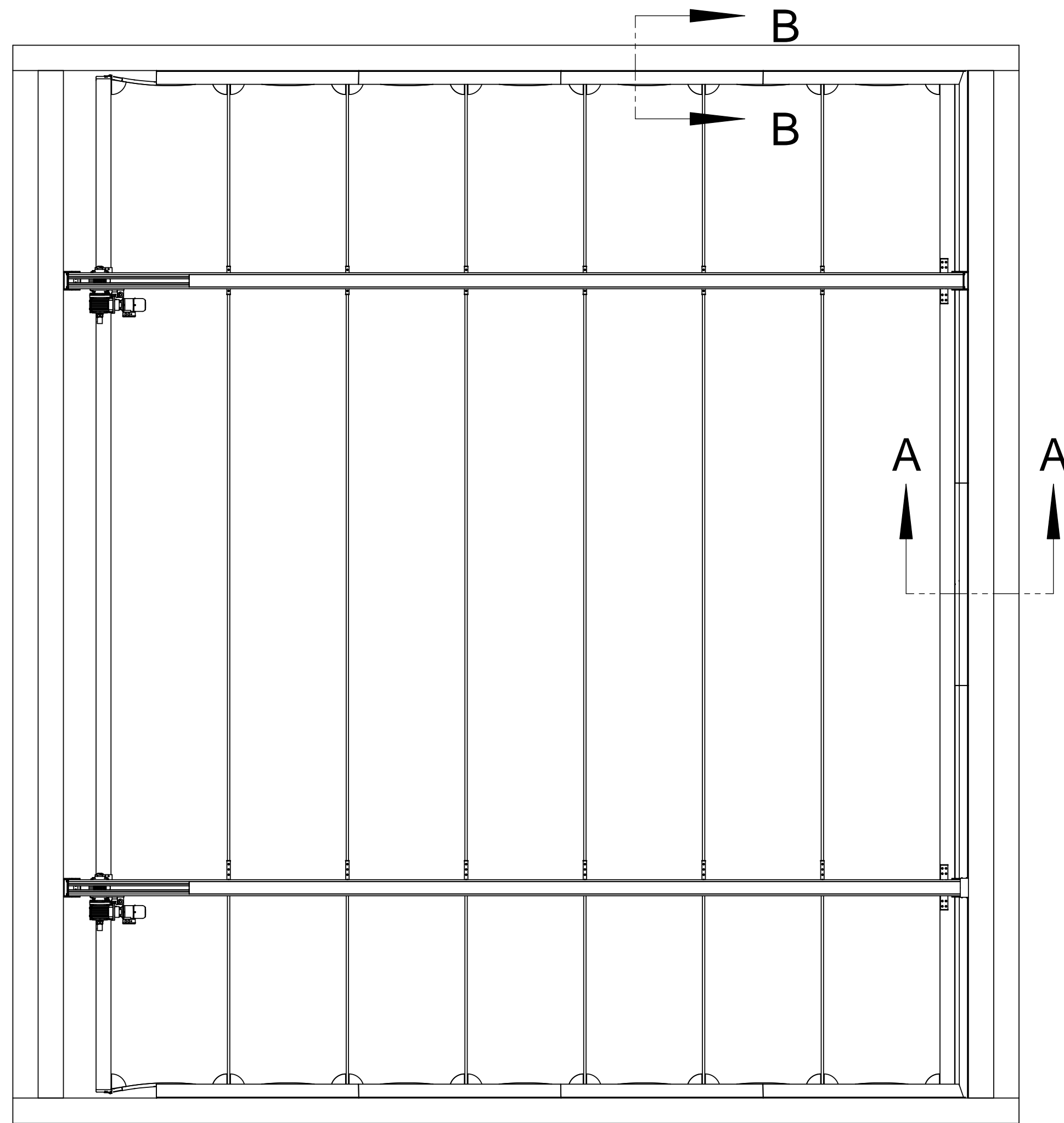
SPANNING BETWEEN TWO WALLS

NOTES:
1. STANDARD CONNECTION DETAILS TO BE USED WITH EN-FOLD DRIVE BEAM ONLY.
USE OF STRONGBACKS REQUIRES ALTERNATE CONNECTION DETAILS DIRECTLY TO THE STRONGBACK.



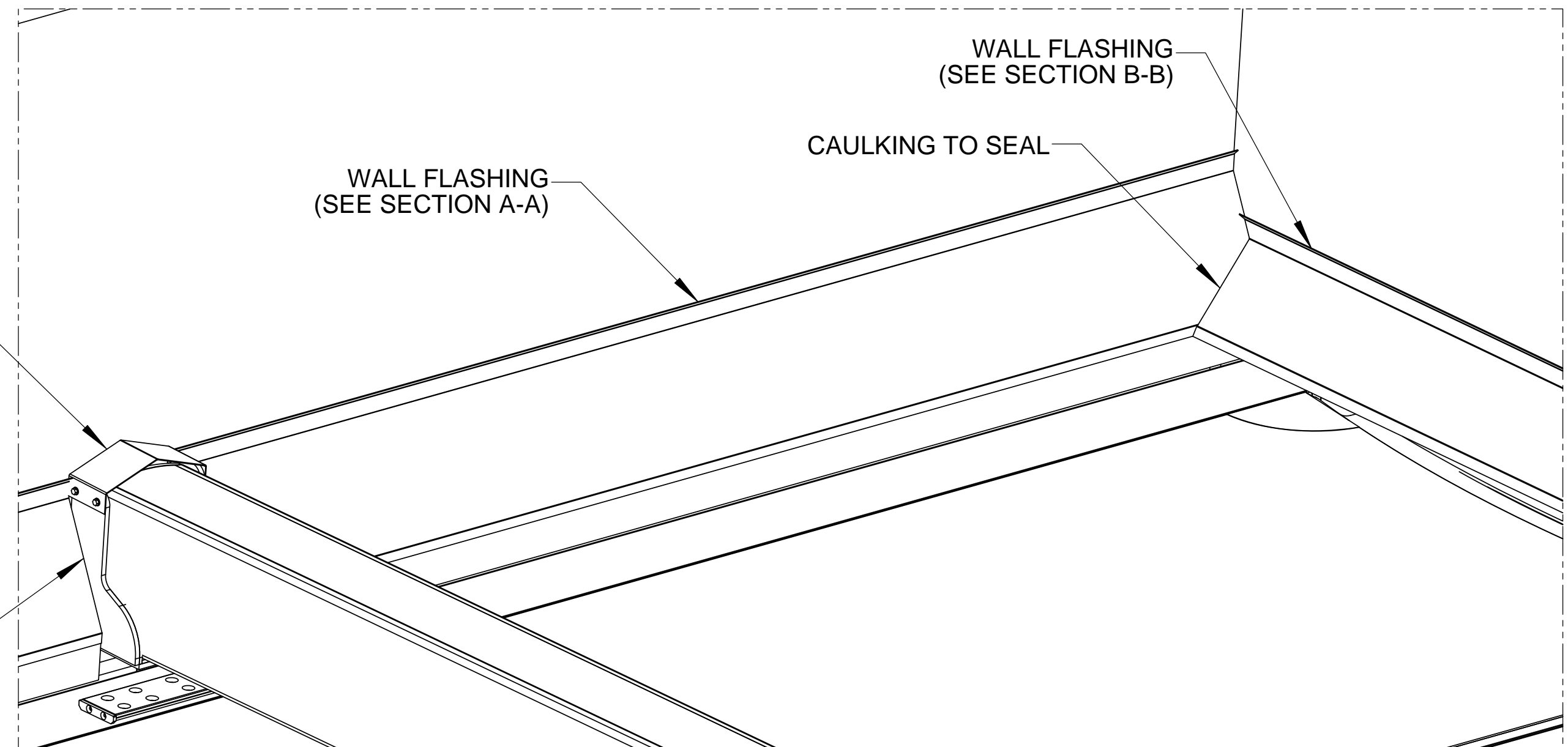
SECTION A-A



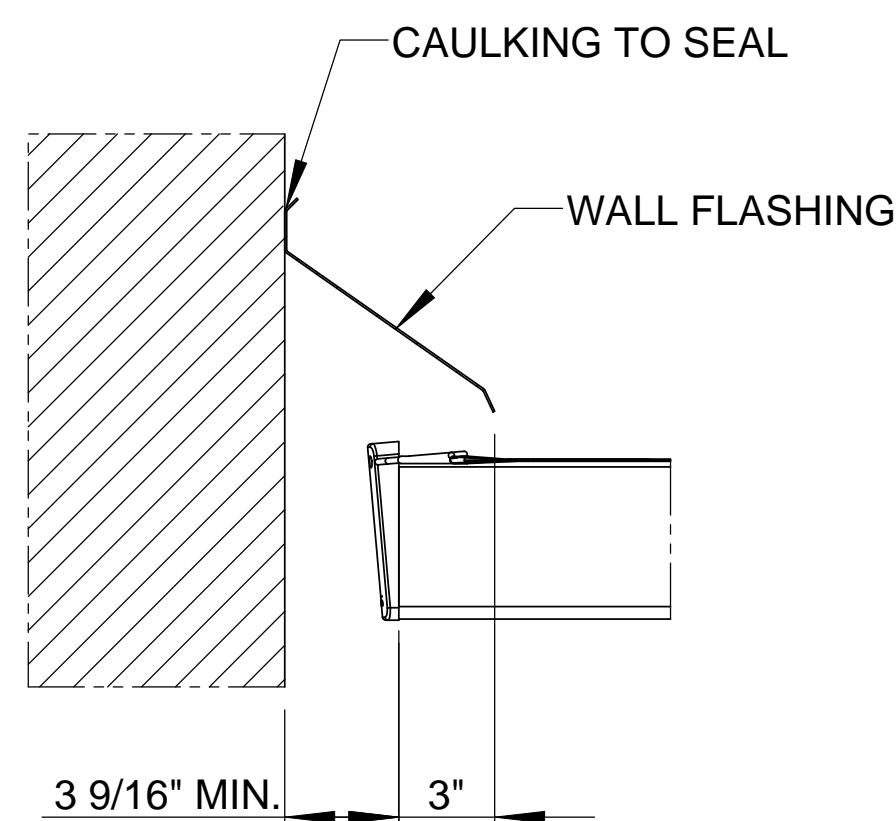


DRIVE BEAM FLASHING

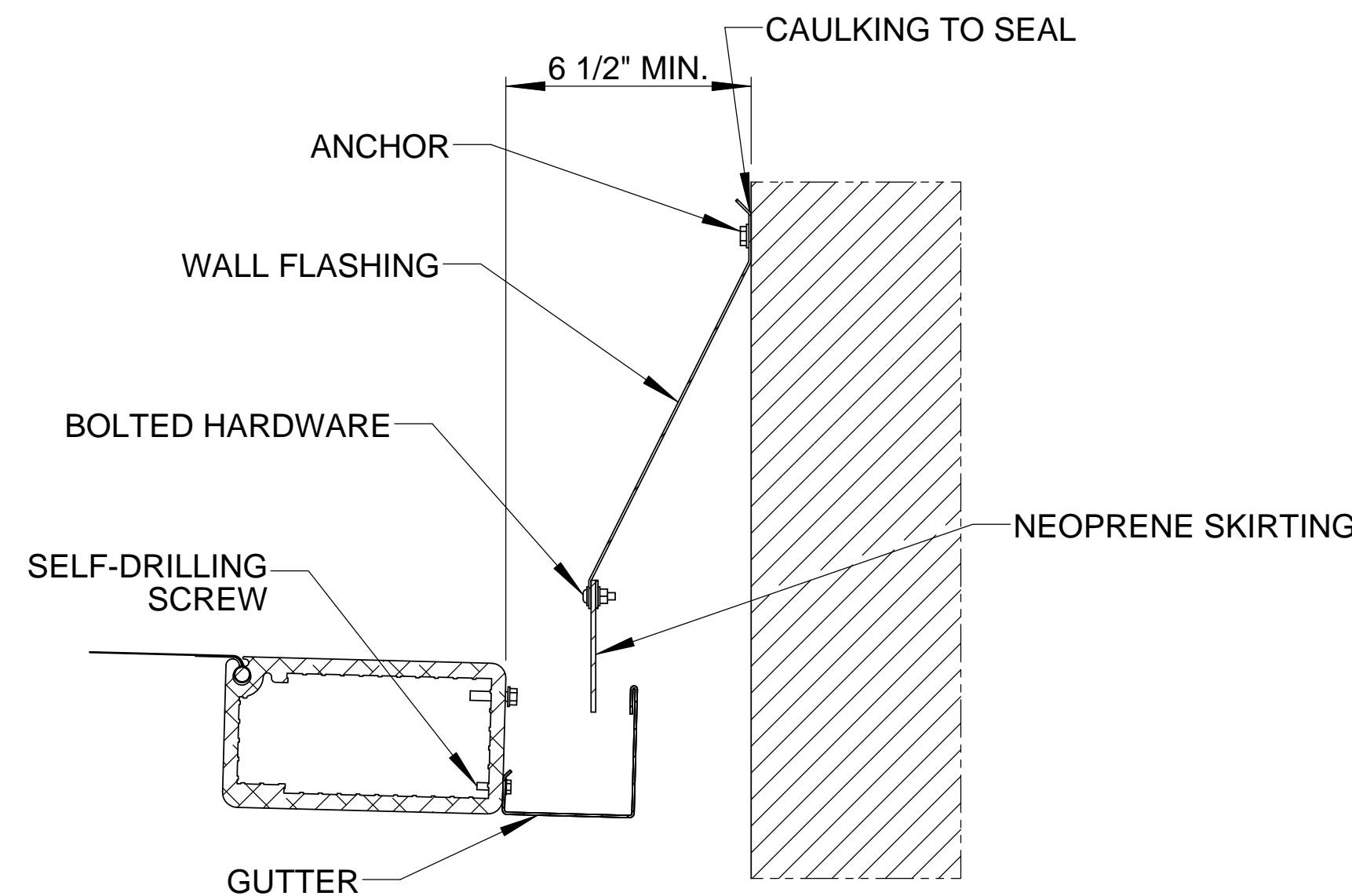
CAULKING TO SEAL



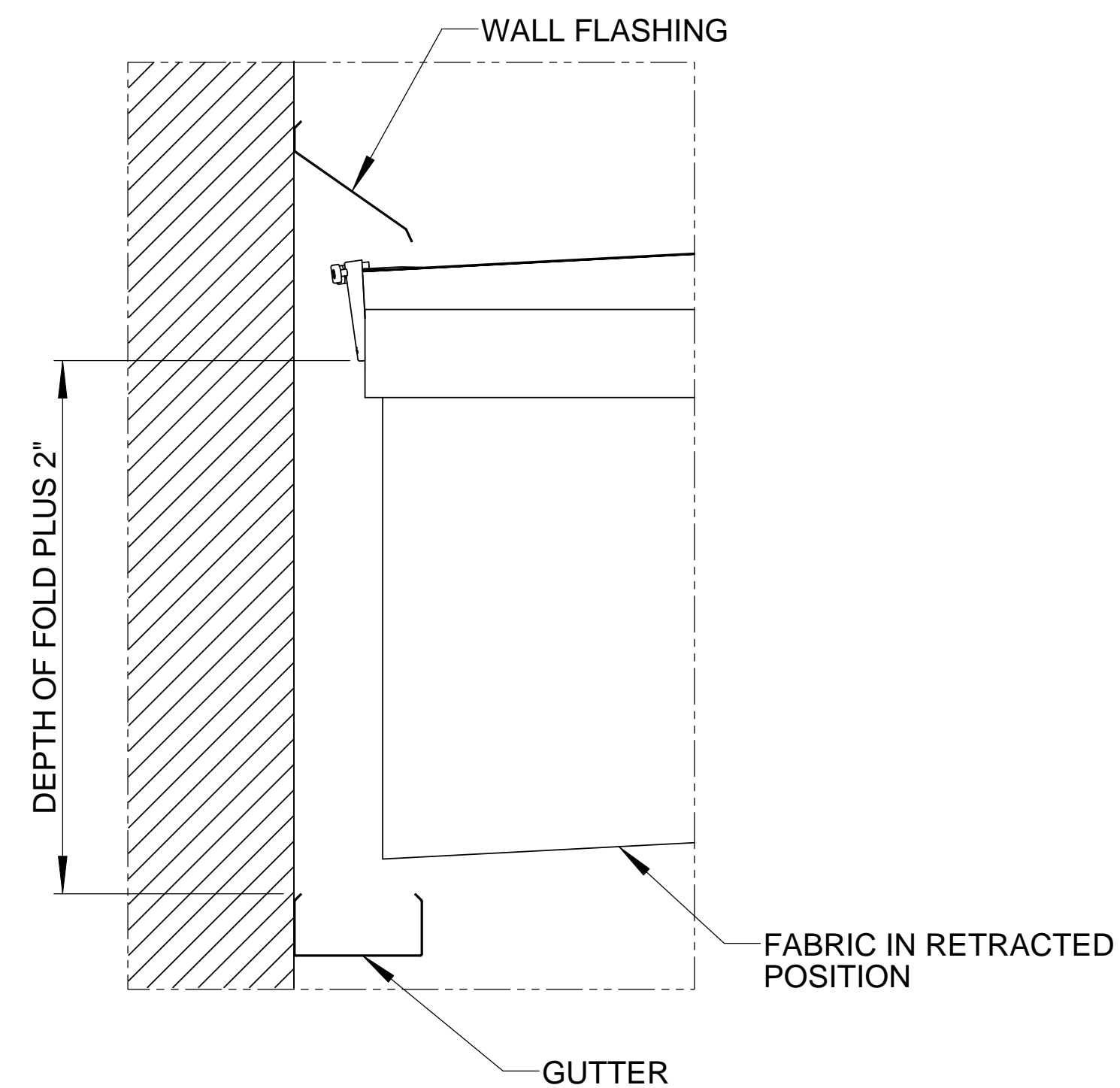
ISO VIEW OF CORNER FLASHING AND DRIVE BEAM FLASHING



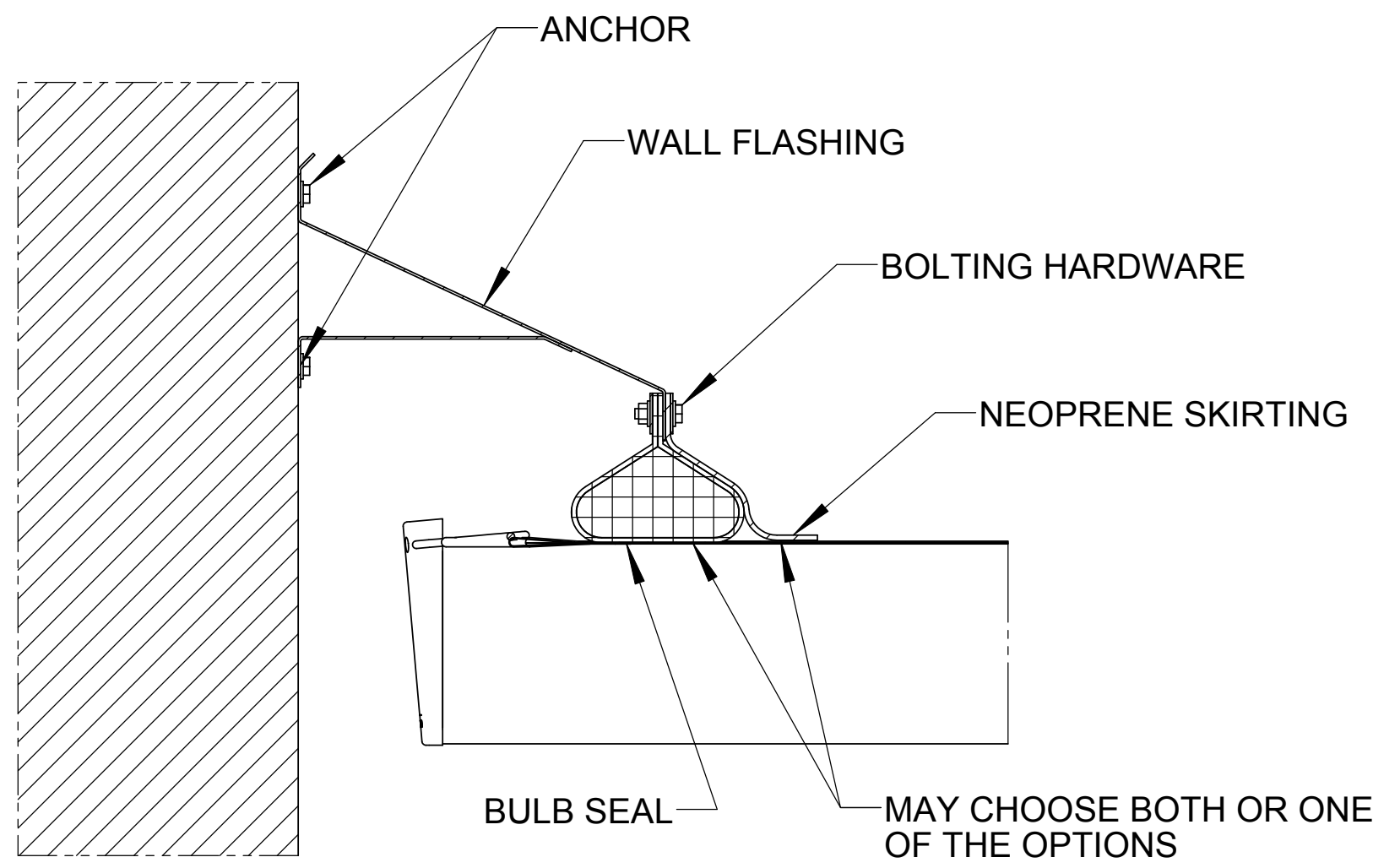
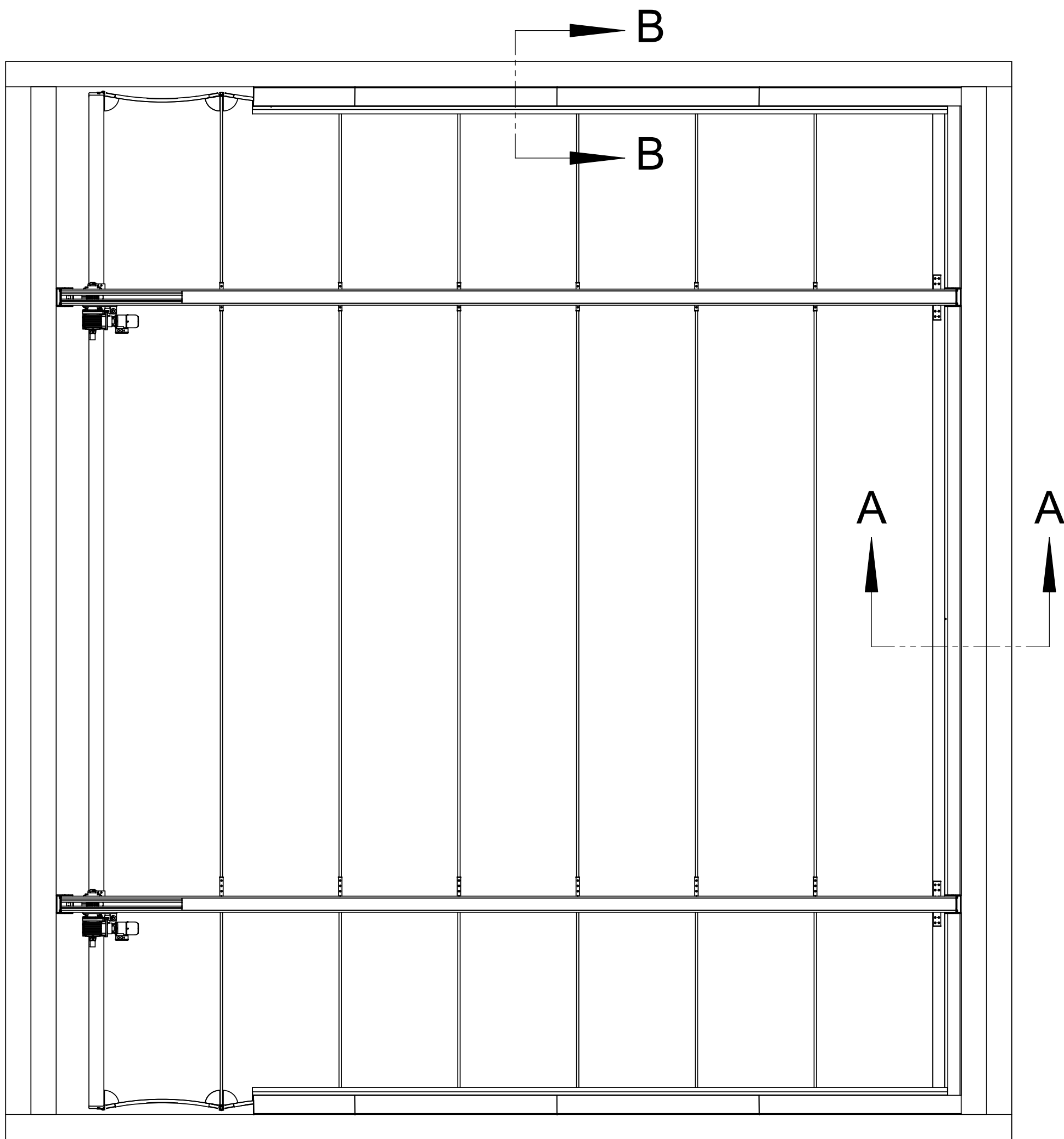
SECTION B-B



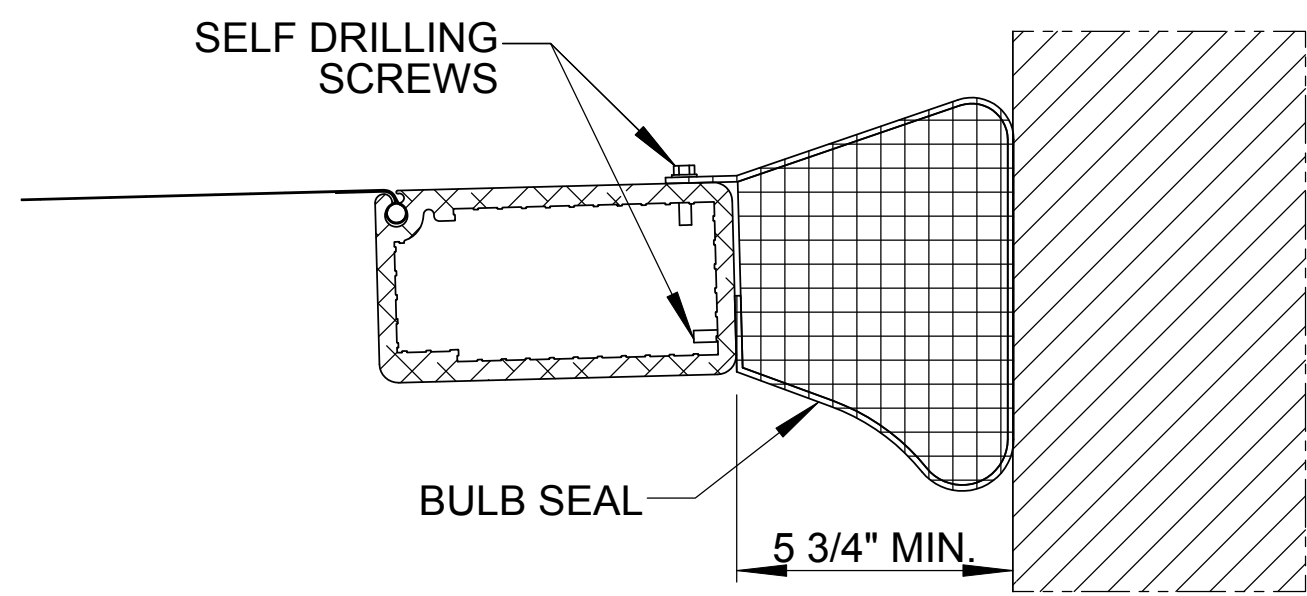
SECTION A-A



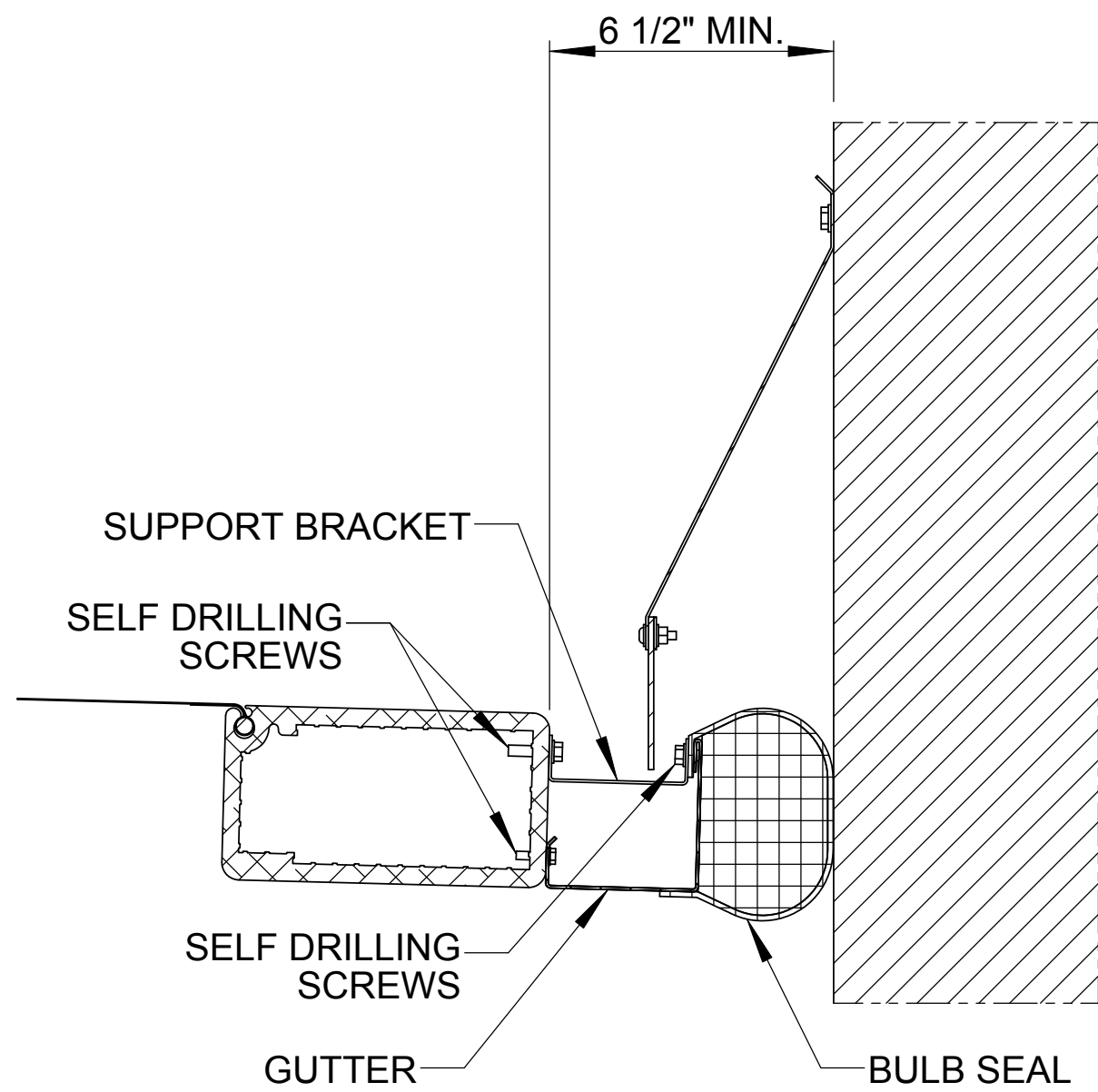
SECTION B-B
AT SLOPED POSITION



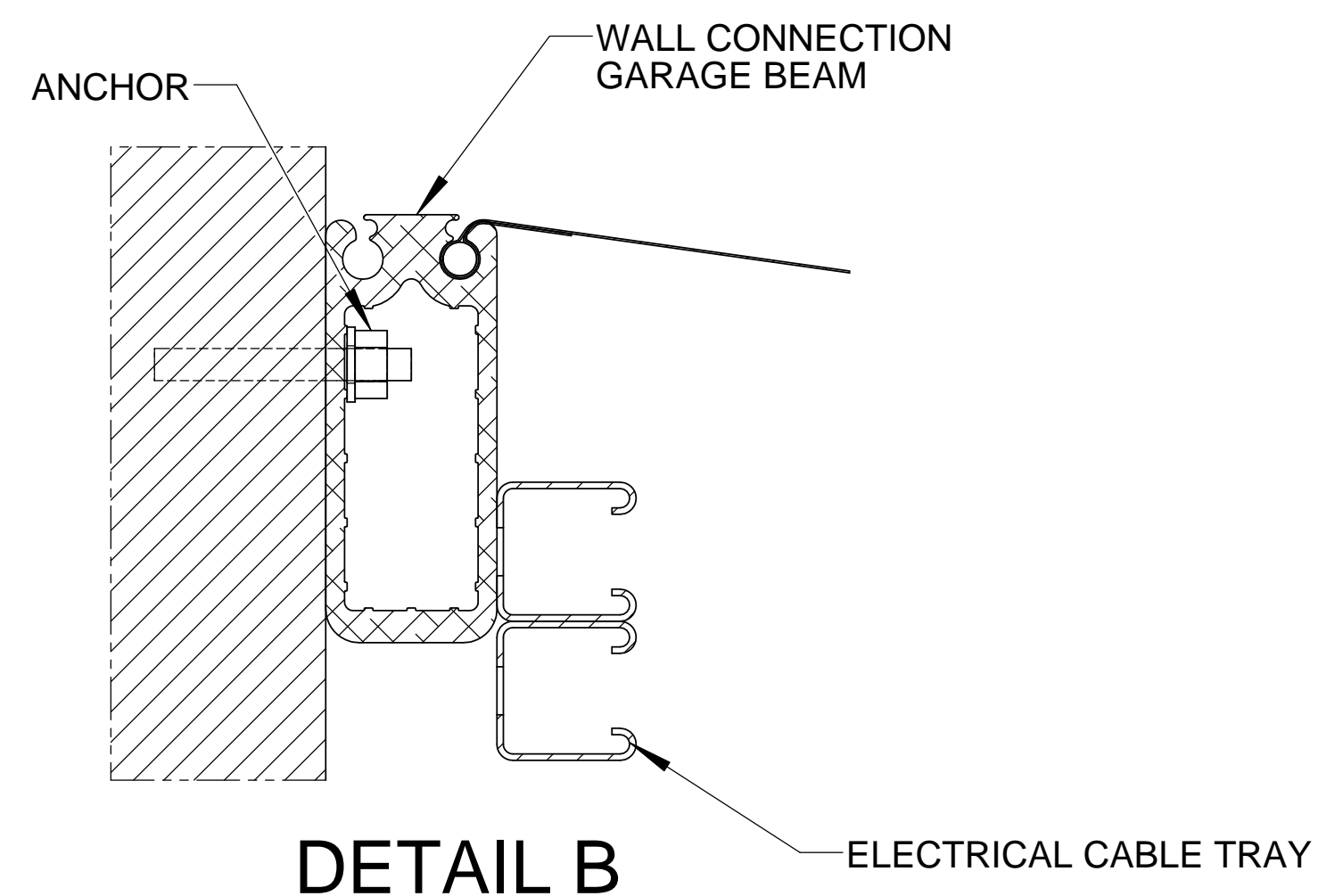
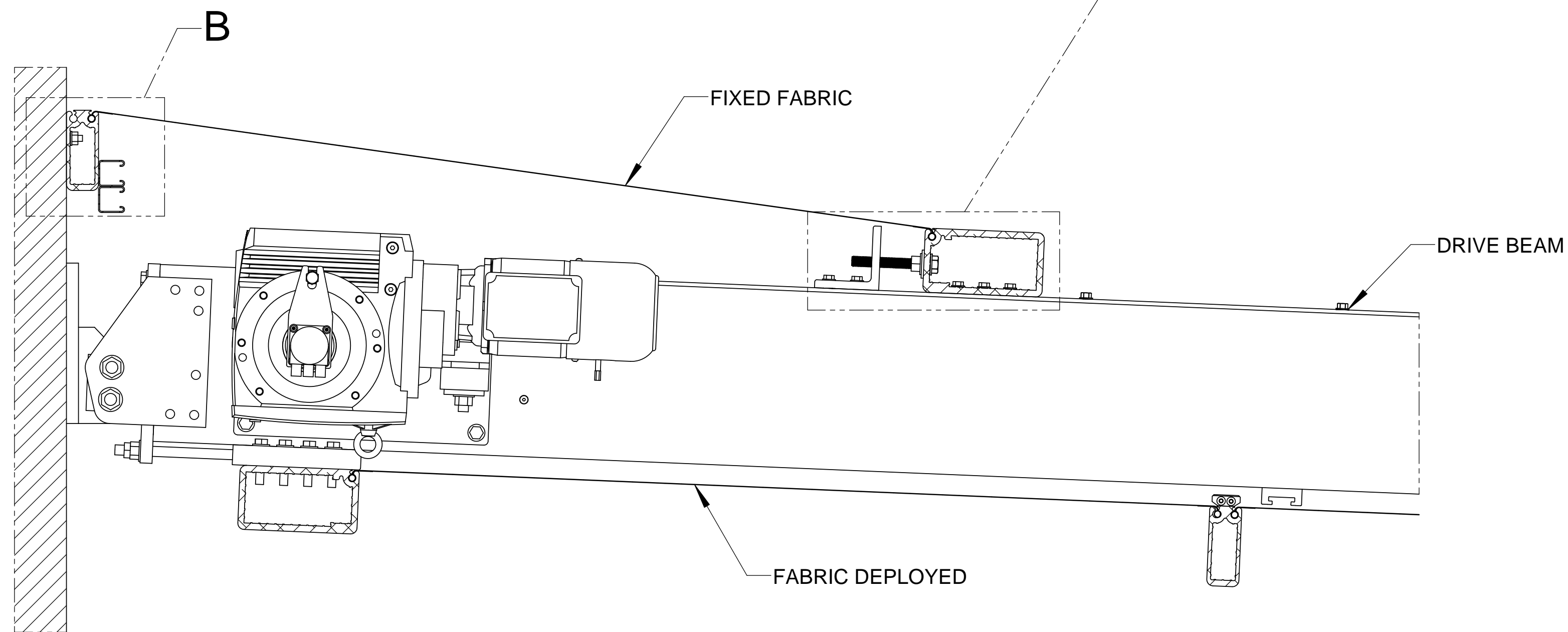
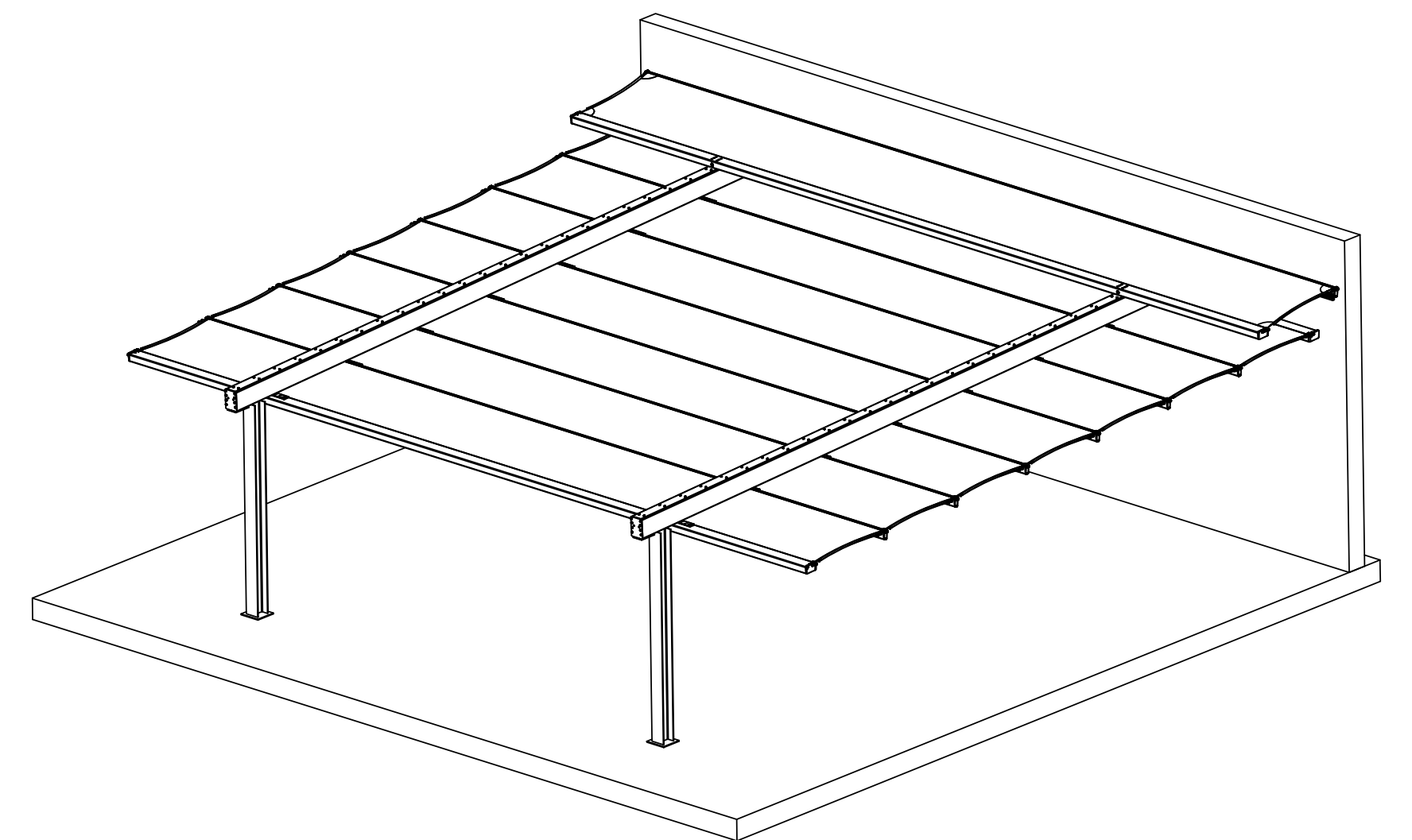
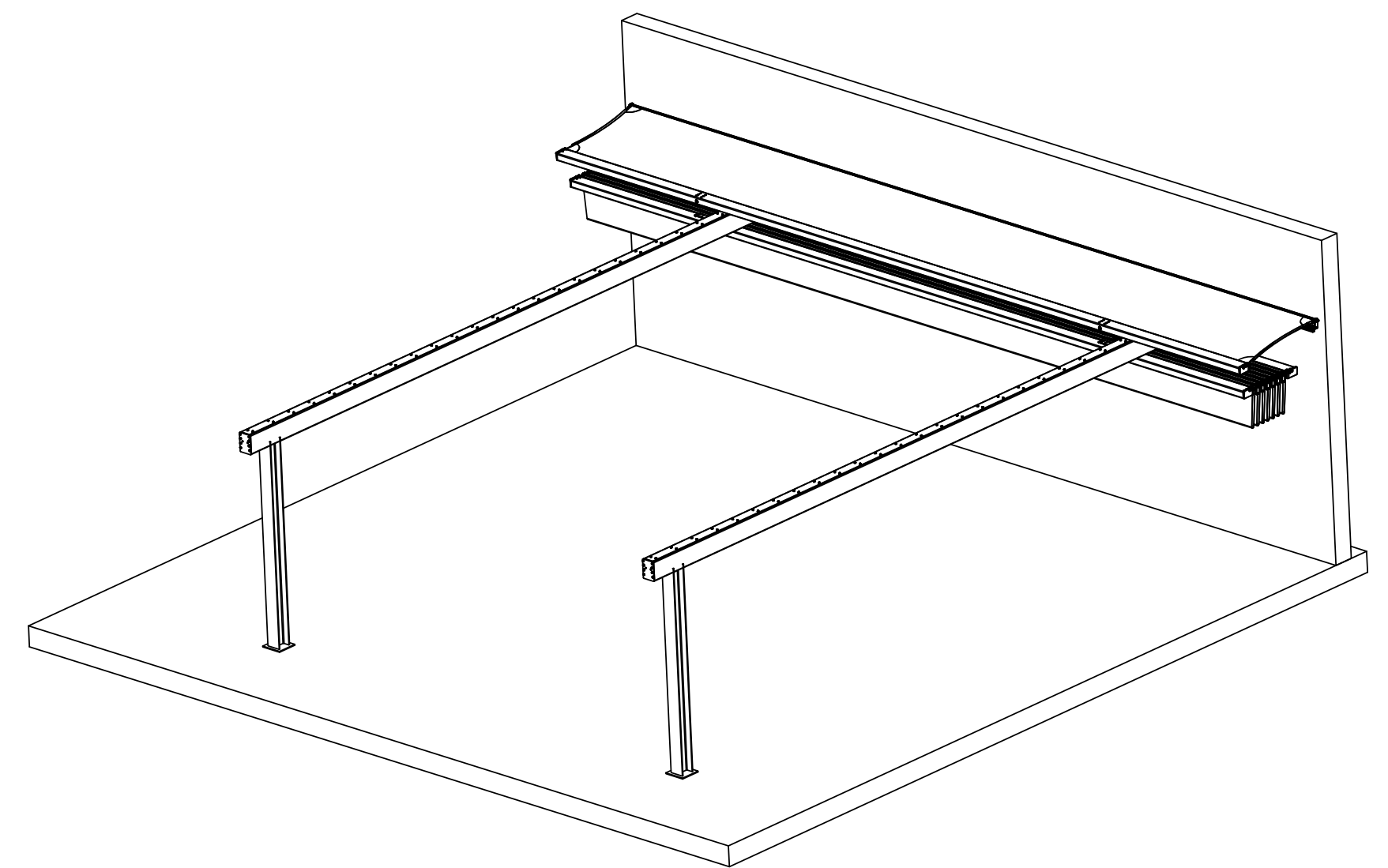
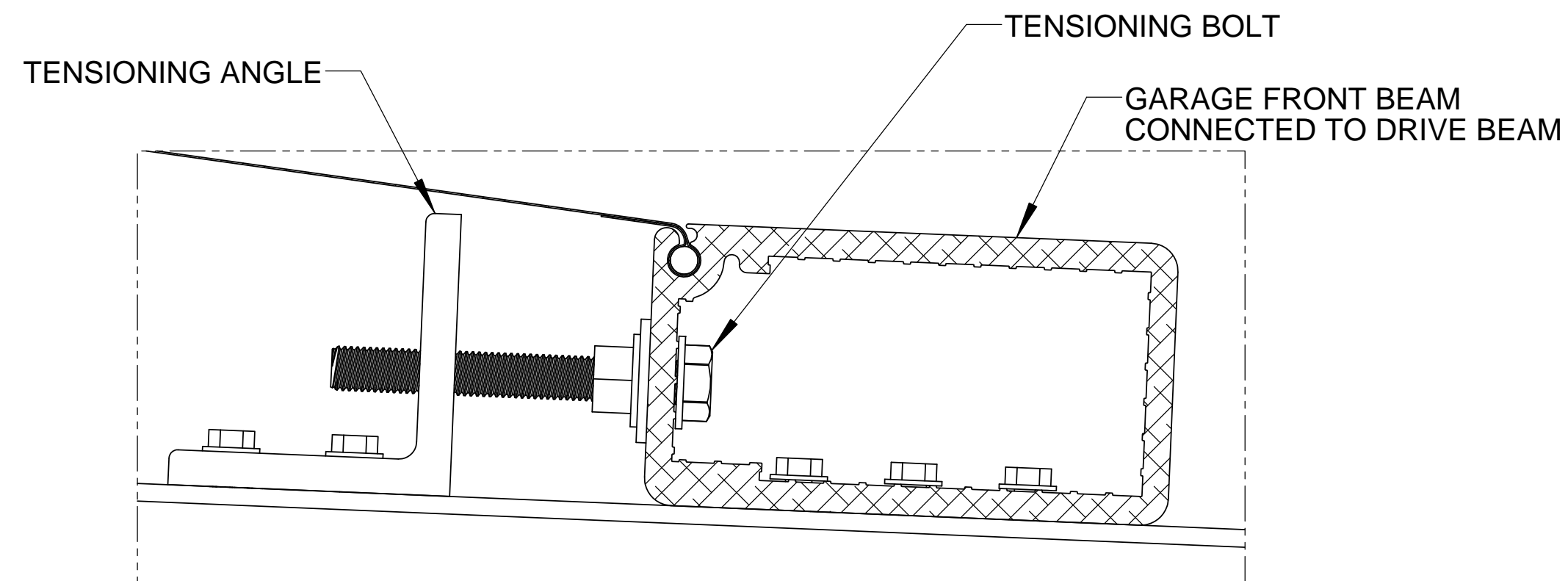
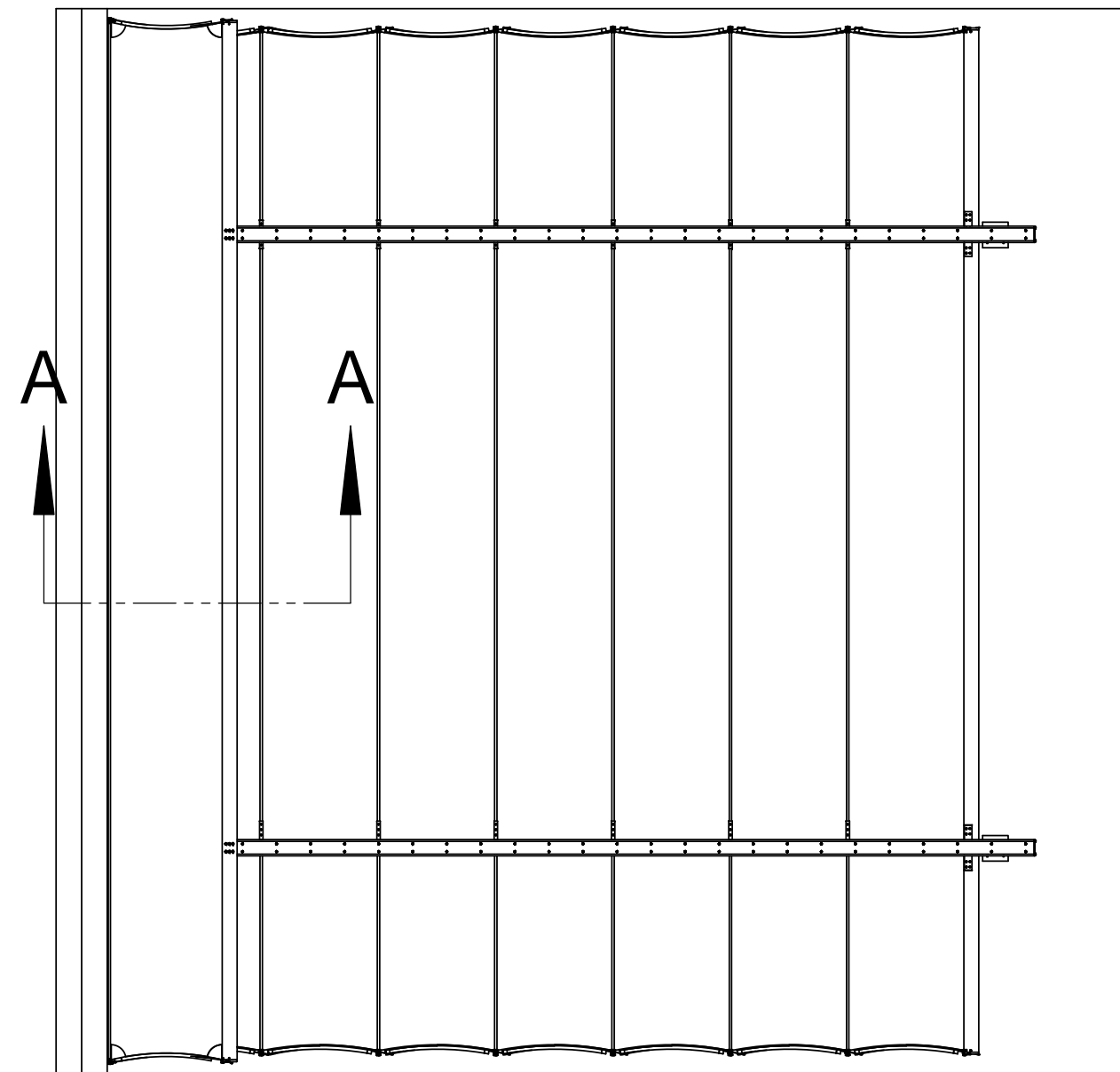
SECTION B-B



SECTION A-A



SECTION A-A
FLASHING AND GUTTER
WITH SEAL



SECTION A-A

DETAIL B

