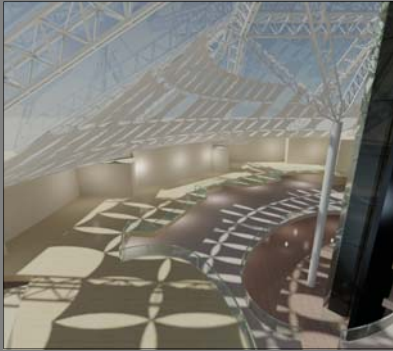


# Tensile Fabric for Interiors

Here are just a few examples of its uses...



## Sunscreens

**At St. Enoch Shopping Centre in Glasgow there was a problem of glare and solar gain from the large glazed roof...**

The solution was an array of 74 sails tensioned onto lightweight frames suspended from the steel frame. Three sunscreen meshes with different translucencies and colours were used to provide an interesting visual impact. The final configuration was chosen after a sun shading analysis, resulting in a higher density of sails on the South-facing side. *This project was carried out with our own ARATA trained rope access riggers working night shifts whilst the centre was still open.*



## Graphic Cladding

**Wilkinson Eyre architects designed a printed fabric cladding to line an atrium with a pattern to match the external glazing...**

In the 40m long central atrium of the Kings Waterfront venue in Liverpool, a series of tensioned banners were required to clad both sides and extend to the full height of the space. As well as designing the steel support system that could cope with a complicated double curvature geometry, the print of the silver fabric mesh needed to line through exactly from panel to panel. *We have our own in house printing facility using UV inks on fabric up to 5m wide.*



## Ceilings

**A totally non combustible fabric feature ceiling was required by Network Rail...**

A series of conical canopies were incorporated in the short term refurbishment of Cannon Street Station that could be backlit. In addition, they were made out of a coated glass fabric to satisfy the demanding fire standards.

*Fabric ceilings can be designed in a number of configurations from framed modular panels to free form double curvature sails.*



## Sculpture

**When Zaha Hadid Architects created the contemporary version of the Chamber Music Hall an experienced fabricator was needed to realise the design...**

The structure consisted of a Lycra clad aluminium frame that spiralled round the performance space defining the seating and stage areas. Each element in the structure was unique in shape, being derived from the designers 3D model.

*We are very happy to work alongside artists and architects from the concept stage to fabrication and installation, offering them the benefit of our experience.*



## Point of Sale

**A garden centre chain wanted a new creative look for their flagship store...**

5 different styles of suspended fabric structures were commissioned using a variety of fabrics ranging from colourful silks to back-illuminated white Lycra. The fabrics were tensioned onto frames and suspended from the roof trusses over pay desks and other prominent locations.

*We work with a wide range of fabrics and are happy to advise on the most suitable for your particular application.*